



# MOVING PEOPLE IN NORTH CAROLINA

*A PANEL DISCUSSION MODERATED BY JOE MILAZZO, II, P.E., REGIONAL TRANSPORTATION ALLIANCE*

PAUL C. WORLEY, CPM, DIRECTOR, NCDOT RAIL DIVISION

JOHN M. LEWIS, JR., CEO, CHARLOTTE AREA TRANSIT SYSTEM

JEFF MANN, GENERAL MANAGER, GO TRIANGLE

# North Carolina Passenger Service





**NC**  
**BY TRAIN**



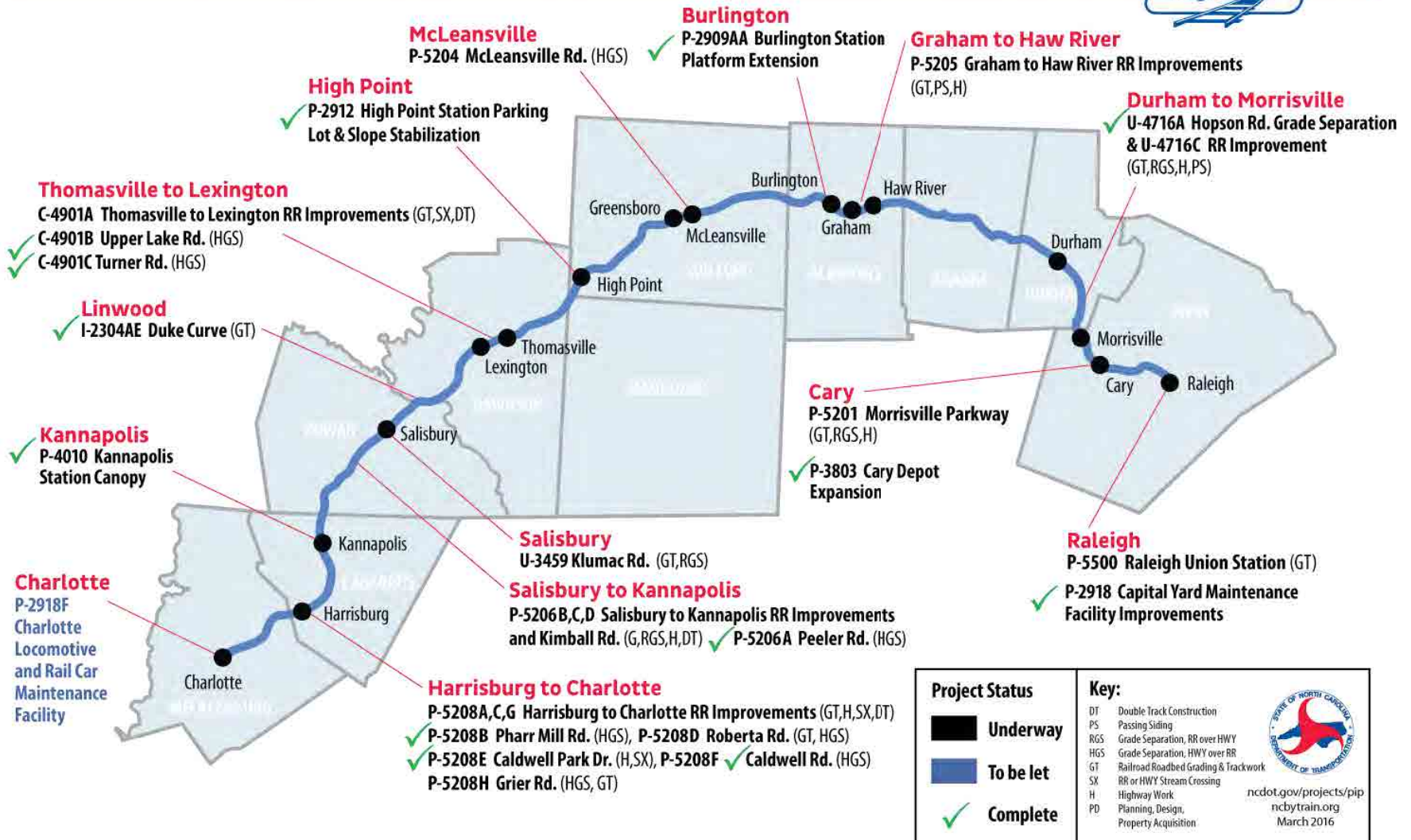
**North Carolina Passenger Service**



Go. Reconnect.

**NC**  
BY TRAIN

# Piedmont Improvement Program Projects



NC By Train – Piedmont Equipment – 7 Locomotives, 11 Railcars, 5 Cab Control Units



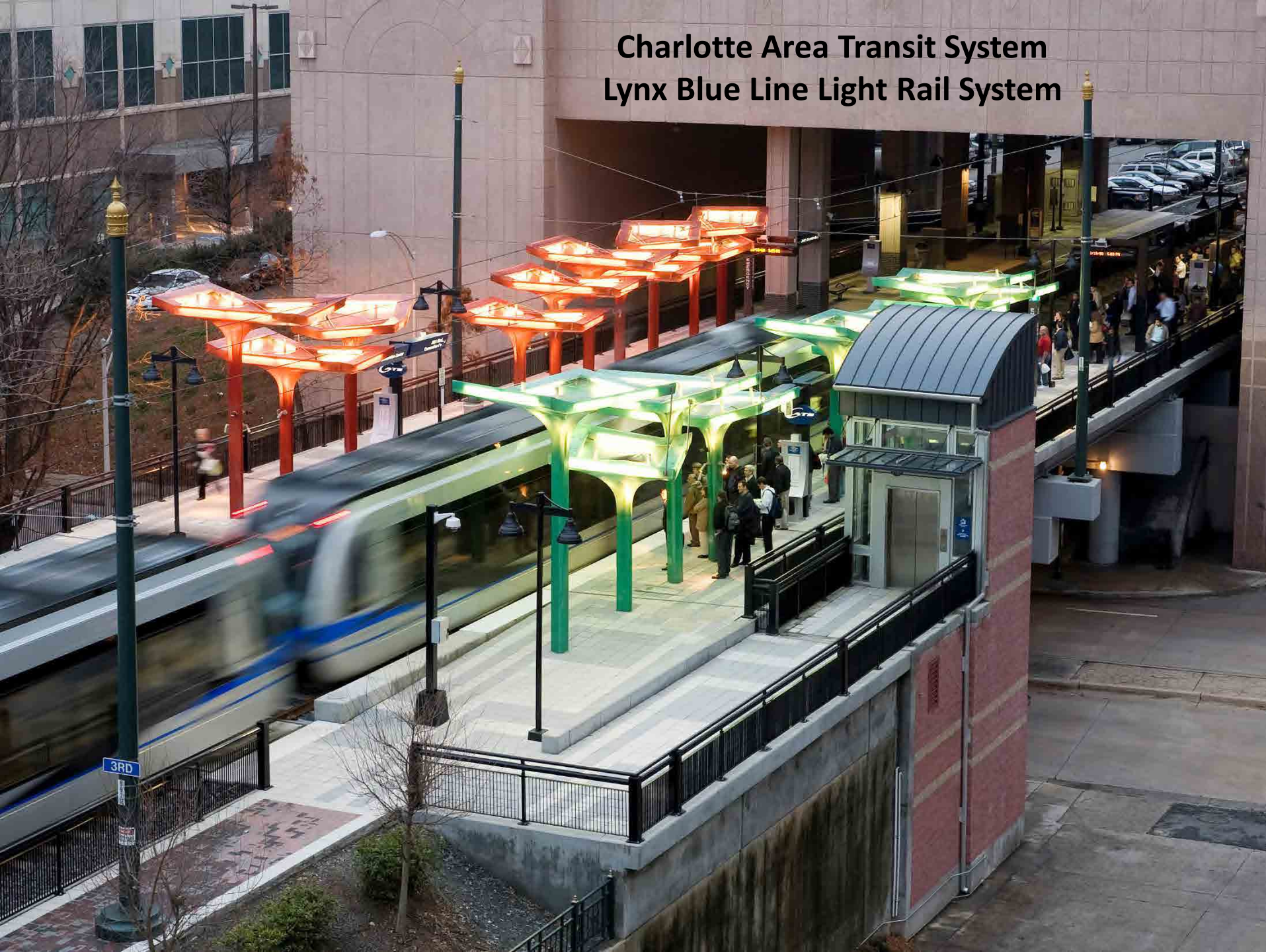


# Charlotte Area Transit System Lynx Blue Line Light Rail System





# Charlotte Area Transit System Lynx Blue Line Light Rail System





## LYNX Blue Line Extension (BLE) Project Overview

- 9.3 miles, 11 stations
- 4 park and ride facilities
- Approximately 3,100 parking spaces
- Accommodates 3-car trains
- 25,000+ daily riders
- Improvements to North Tryon St.
- Connects UNC Charlotte campuses
- 22 minute commute from Uptown to UNC Charlotte
- Initial peak period service 7.5 minute frequency
- Connecting bus services
- Revenue service in 2017



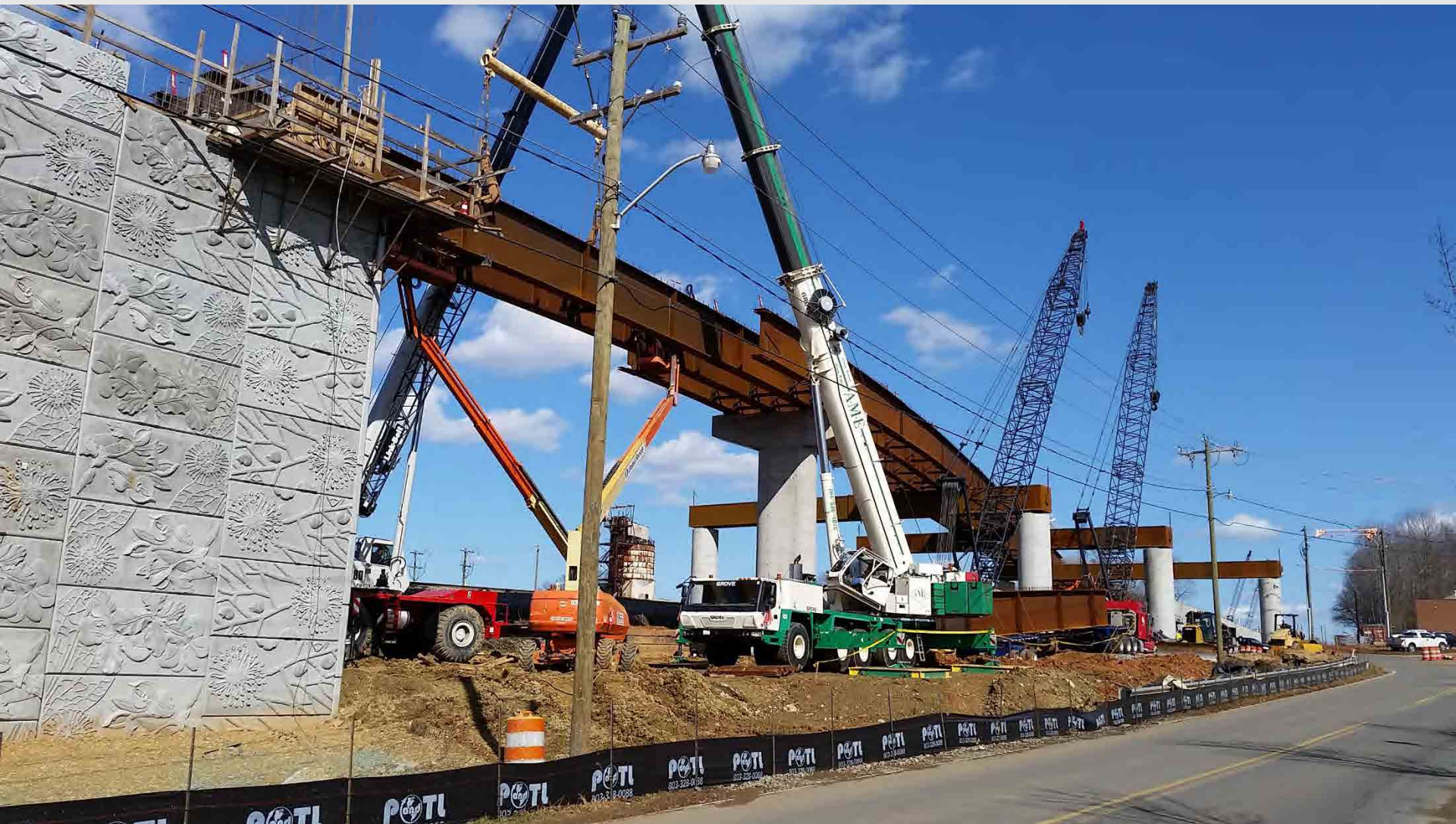


**Charlotte Area Transit System  
Lynx Blue Line Extension  
Under Construction  
(Orr Road and Old Concord Road)**





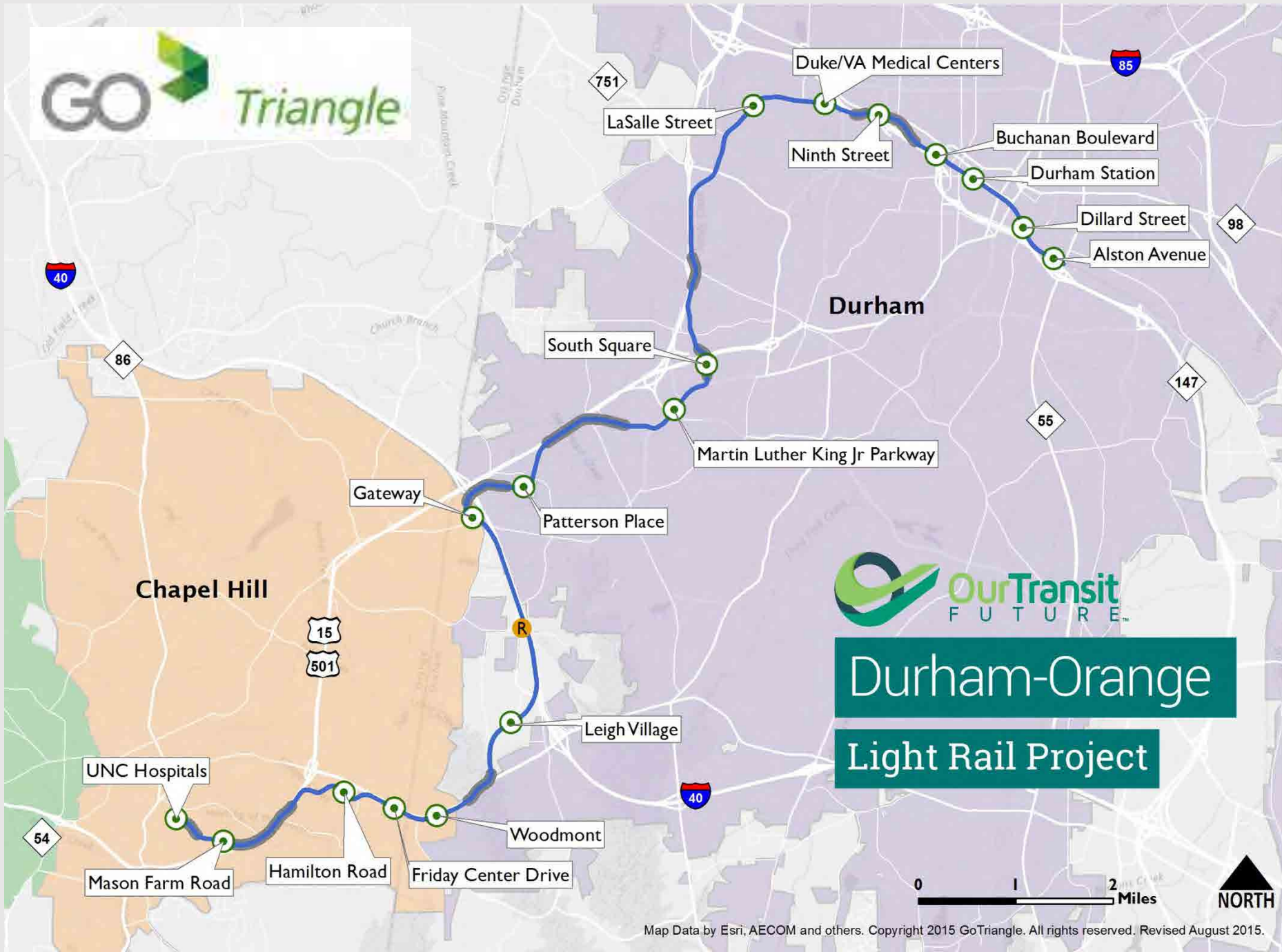
# Charlotte Area Transit System Lynx Blue Line Extension Under Construction (Craighead)





**Charlotte Area Transit System  
Lynx Blue Line Extension  
Under Construction  
(Parkwood Station)**









## Durham-Orange Light Rail – Proposed Woodmont station

*Conceptual only, subject to change without notice.*



## Durham-Orange Light Rail – Proposed Durham Station

*Conceptual only; subject to change without notice*